



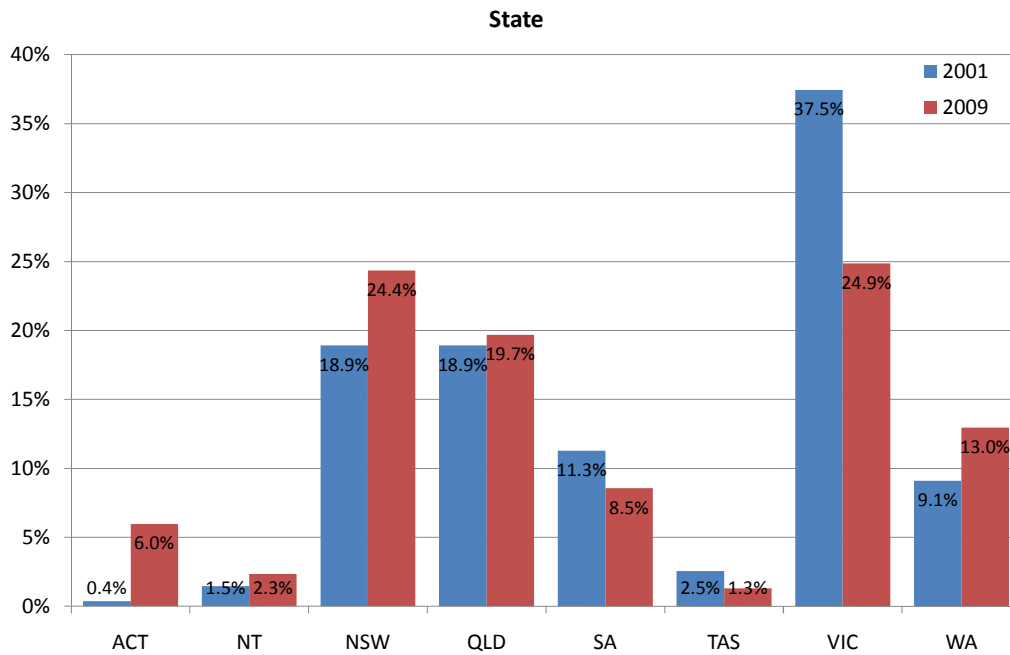
---

# *Veterinary Support Staff Survey Report 2001 and 2009*

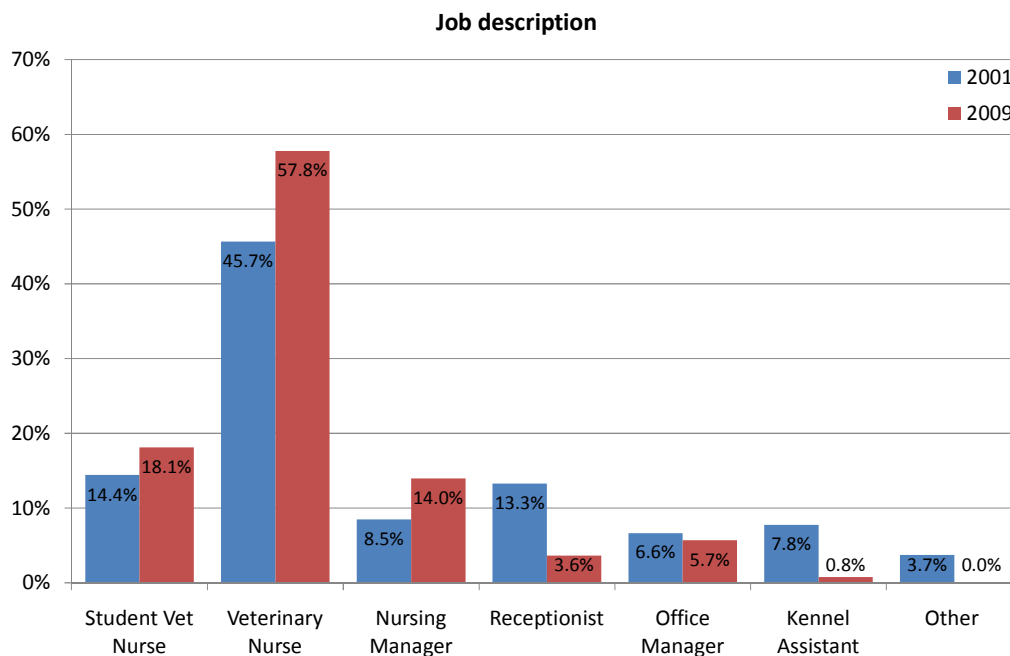
---

*A study of veterinary support staff in Australia was conducted in 2001. This was a very successful study with 275 respondents completing the questionnaire. The study was repeated in 2009, with a total of 386 respondents. The two studies are compared here, with the aim of determining any employment changes that had occurred within the veterinary nurse profession over the interim eight years.*

*As the 2009 study contained several questions that were not covered in the 2001 study, comparisons cannot be made for all results gathered.*

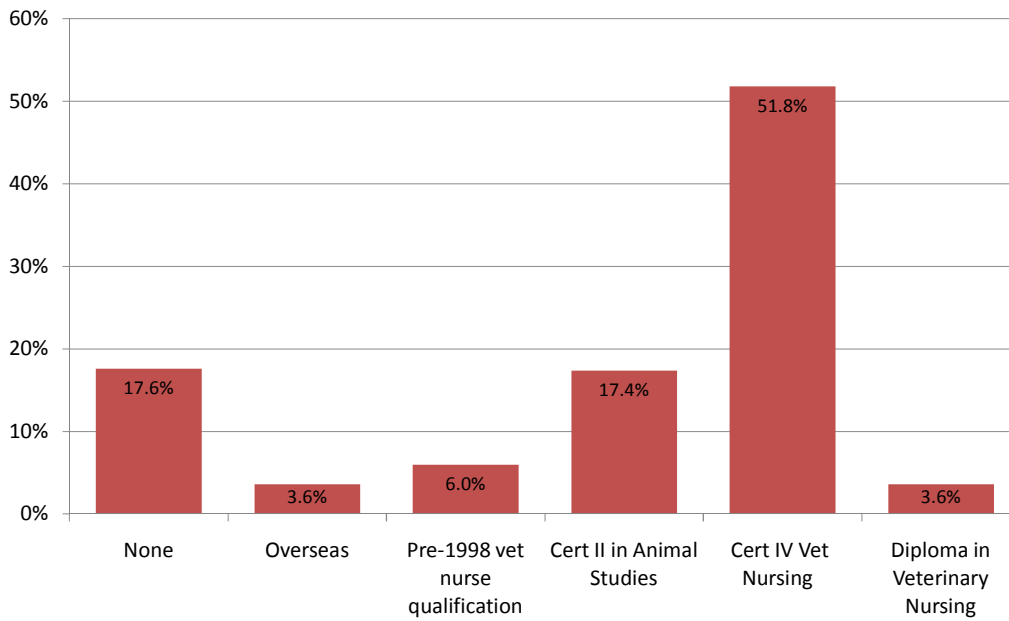


The respondents were from all over Australia. In 2001, considerably more respondents were from Victoria, however in 2009, this had reduced with the number of respondents from Victoria approximately equivalent to that of New South Wales.



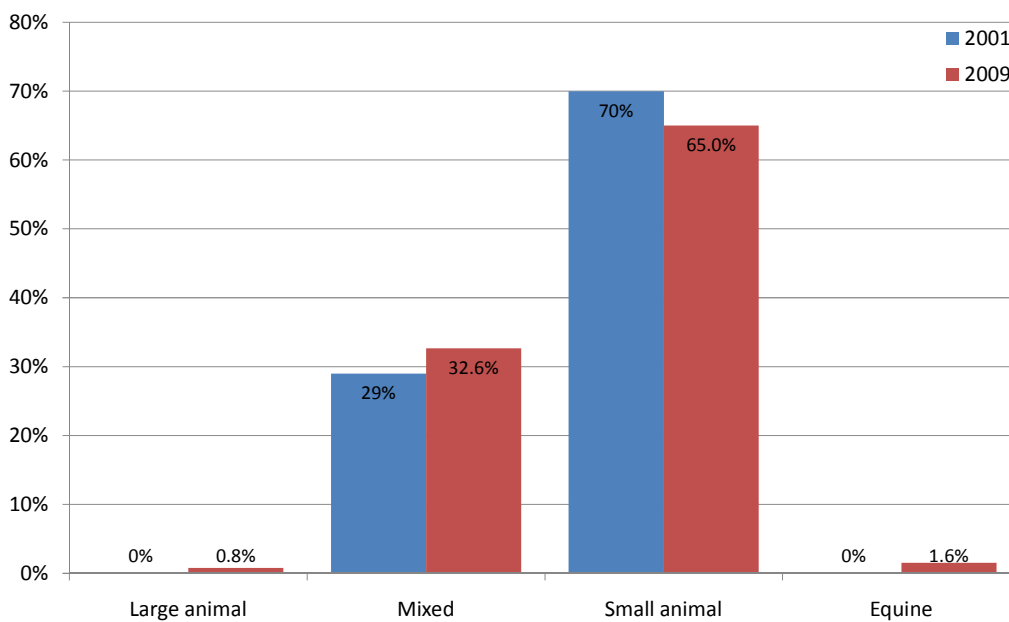
Since 2001, the number of respondents who classified themselves as a 'Veterinary Nurse' had increased, with more than half of respondents in 2009 reporting that they were a 'Veterinary Nurse'. A drop of 10% was seen in those respondents who called themselves a 'Receptionist'.

**2009 - Highest qualification attained**



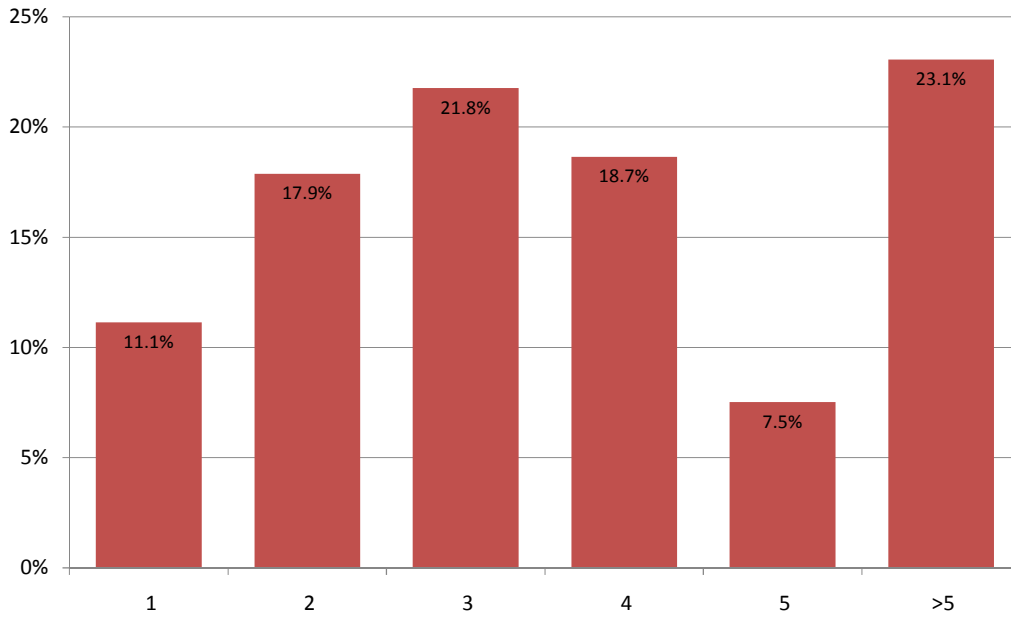
In 2009, over half of respondents reported that they had attained their Certificate IV in Veterinary Nursing. Fewer than 4% had achieved their Diploma of Veterinary Nursing. There were slightly more respondents that reported that they did not have a qualification, than respondents that held a Certificate II in Animal Studies.

**Practice type**



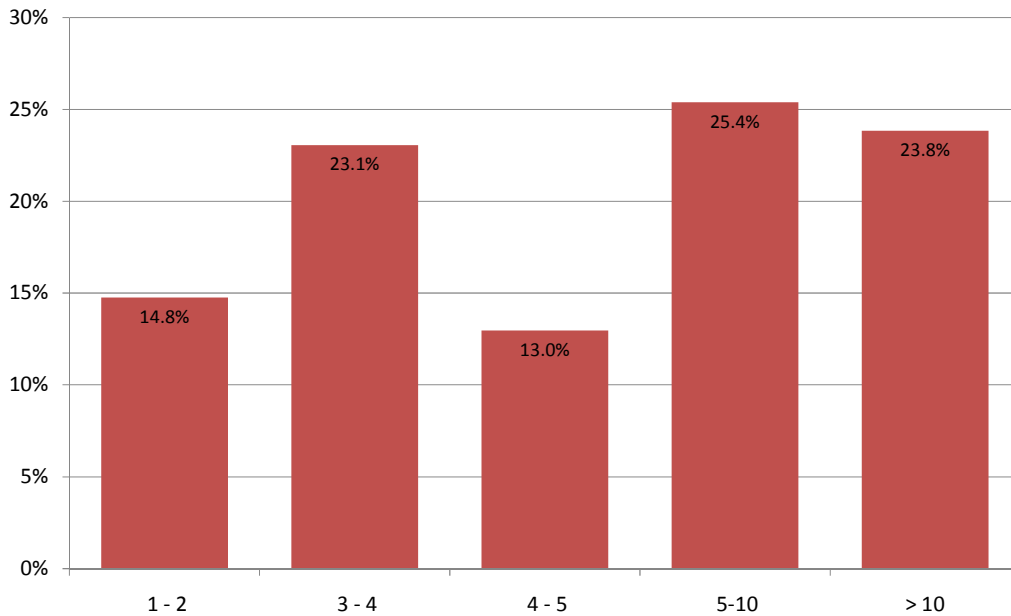
The different types of practice in which respondents worked varied very little, with a slight increased in the number of large animal and equine practices in 2009.

2009 - Number of vets in clinic

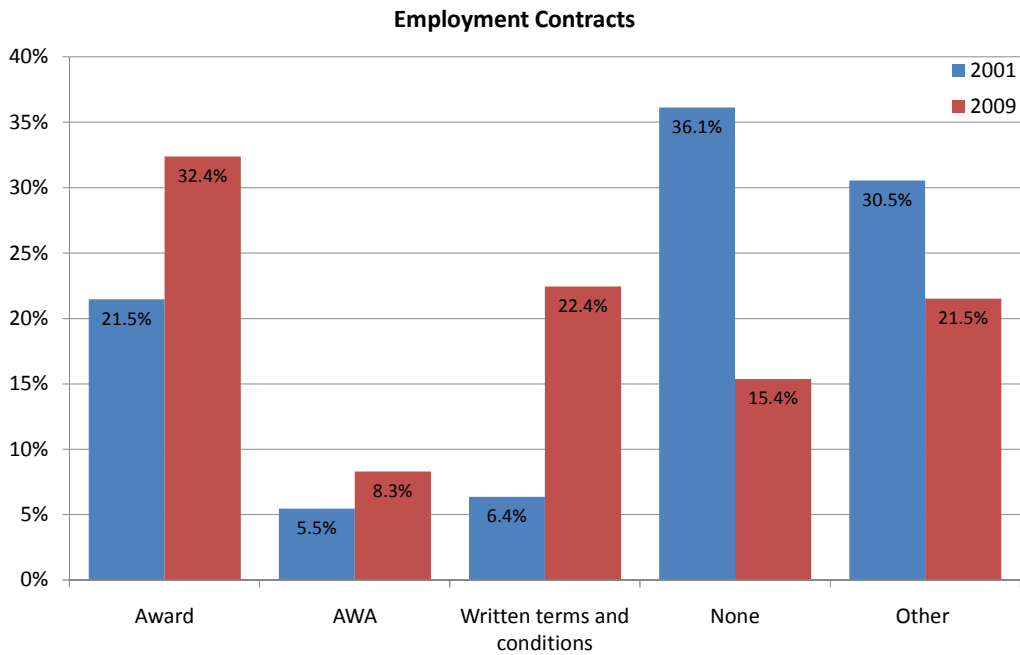


In 2009, most respondents were working in clinics with 3 veterinarians, or with more than 5 veterinarians. Less than 10% of respondents were working in clinics with 5 vets.

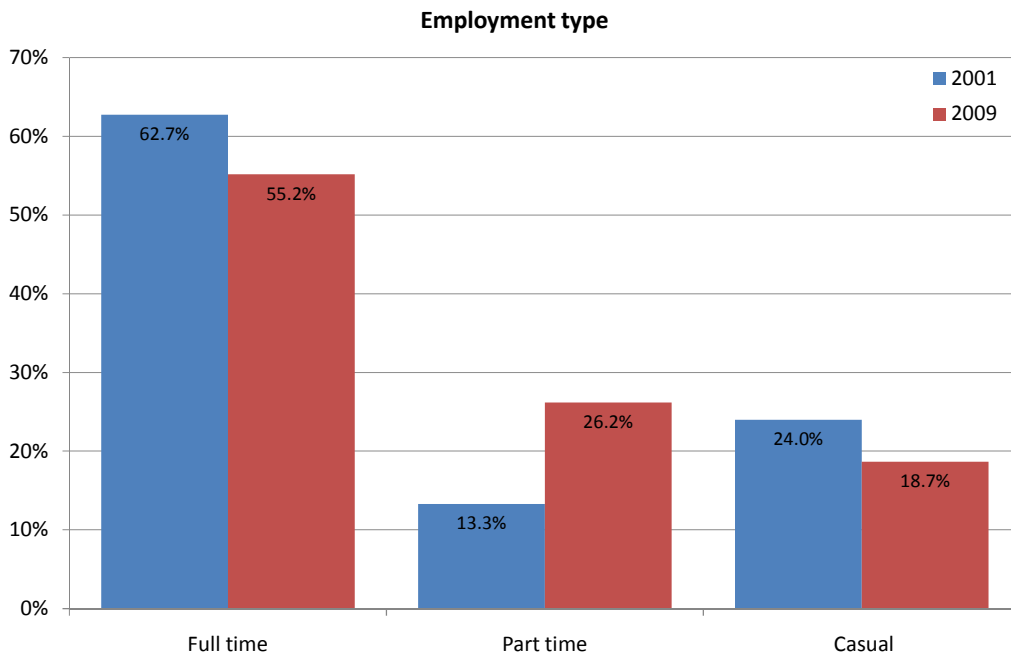
2009 - Number of support staff in clinic



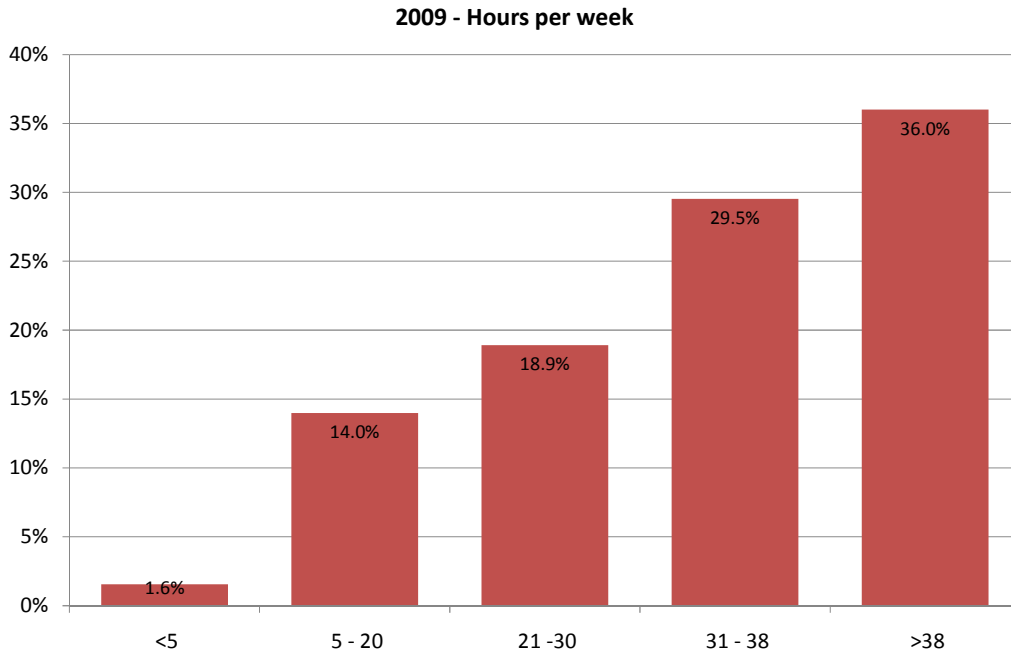
In 2009, over a quarter of respondents were working in clinics with 5 to 10 support staff. Interestingly, approximately equal numbers of respondents were working in clinics with 3 to 4 or in clinics with more than 10 support staff.



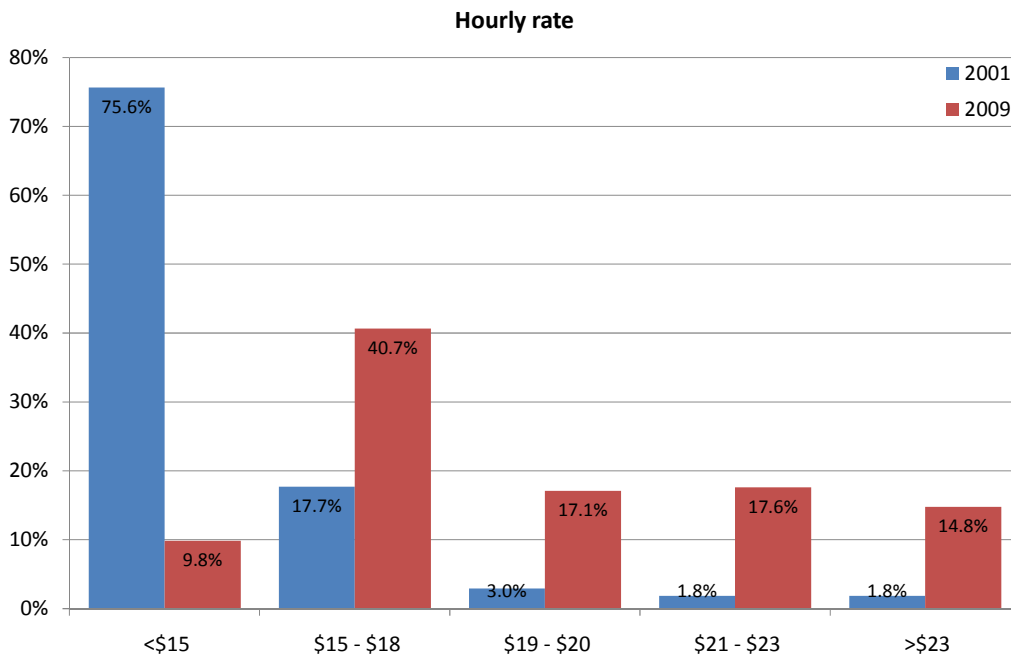
In 2001, over a third of respondents reported that they did not have a contract of employment. However, this had decreased by 2009, with only 15% of respondents now reporting that they did not have an employment contract. In 2009, an increase of more than 10% was seen in the number of respondents employed under a state award.



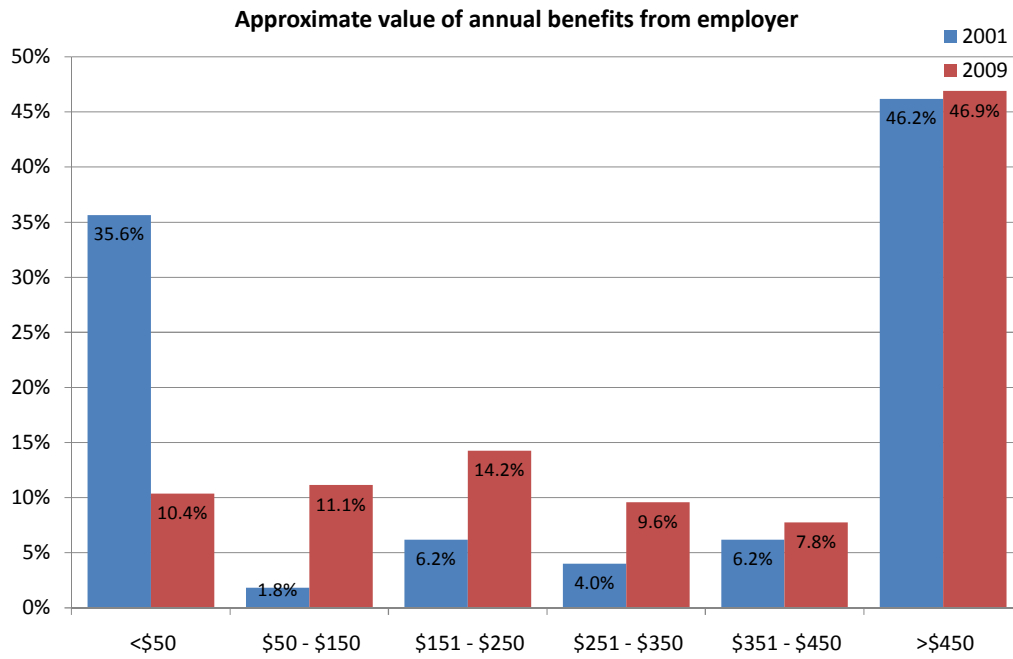
The number of respondents employed on a part-time basis had doubled between 2001 and 2009, with over a quarter of 2009 respondents working in a part-time capacity. Fewer respondents were working as casual or full-time employees in 2009, as compared to 2001.



In 2009, more than a third of respondents worked more than 38 hours per week. Fewer than 2% reported that they worked less than 5 hours a week.



A significant difference was seen in the hourly rate of pay of respondents between 2001 and 2009. In 2001, over 75% of respondents were paid less than \$15, and by 2009, this had dropped to less than 10%. In 2009, most respondents were paid an hourly rate between \$15 and \$18. Approximately equal numbers of 2009 respondents were paid \$19 to \$20, \$21 to \$23 or more than \$23 per hour.



Just under half of 2001 and 2009 respondents respectively reported that they received annual benefits from their employers, such as continuing professional development, free or low cost pet food, treatment for their own pets or other bonuses or incentives to the value of more than \$450.